



Renewables Asset Management System for your wind farm



Axpo xREM

Empowering you with essential data and analysis

Axpo xREM - Real Time Monitoring

Axpo xREM provides wind farm operators with a system to oversee their wind farm operation with easily accessible, transparent and independent information to better challenge the performance of the wind farms.

The standard infrastructure of Axpo xREM offers the possibility to monitor in real time the full operating portfolio without depending on the wind turbine technology. Axpo xREM is supported by new Big Data technology, which provides substantial cost advantages for the operators while it reduces time to manage and analyze the relevant operational data from one unique source of information.

The Real-time information is provided by three complementary products Axpo xREM Desktop, APP Mobile (iPhone and Android), and automatic PDF reports, each with accurately selected information, allowing the user to alert service providers in a timely manner.

Main Characteristics



All wind technologies
in one place



Standard Data
Base Structure



Wind turbine status
and site availability



Main operational figures
for predefined time frames



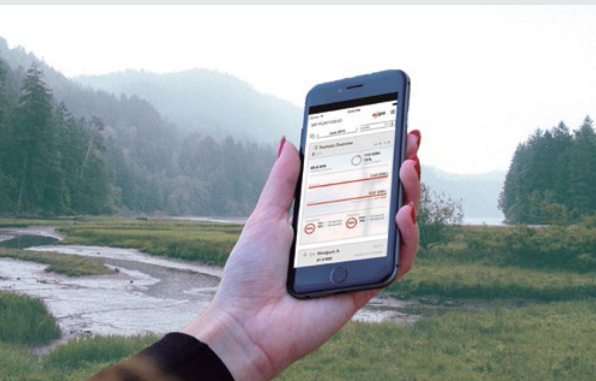
Real Time Monitoring at portfolio,
site and wind turbine level

Desktop



- Budget follow-up (Key Performance Indicators, Energy Losses, Forecasted Production, Revenues)
- Centralized data base (performance benchmarking)
- Wind turbine performance monitoring (Power Curves, Reactive)
- Main components monitoring
- Customized chart (download data, customized graphics and analysis)

App Mobile



- Direct access to WTG status and most recent events
- Capable of releasing actions to main stakeholders for a prompt reaction
- Easy site availability adjustment to minimize imbalance cost
- Mobility

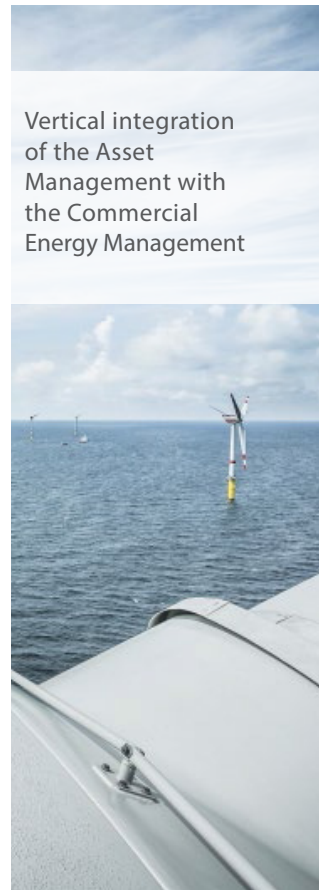
Reports

- Operational figures in a daily, weekly and monthly basis
- Top events with highest impact on lost production
- Real vs. theoretical performance
- Real Power Curves
- Wind conditions at site

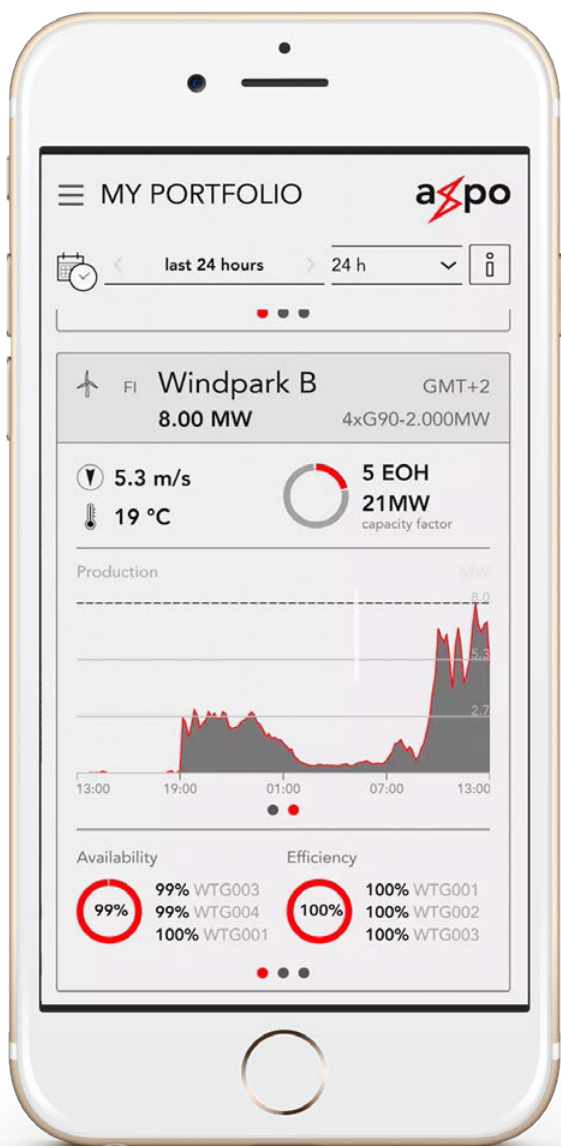
Axpo xREM - Asset Management

Axpo xREM engages the key competencies at Axpo group to support the operating assets for the benefit of our clients.

- Operational data analysis; performance measurement
- Mechanical and electrical losses; failure rates and energy losses
- 24/7 real time monitoring; WTG access control allowing safe and timely access to all authorized personnel working on wind farms
- Closely monitor inclement weather conditions (i.e. lightning) which may affect the safe operation of assets and pose a risk to the personnel
- Independent advisor for proposals of production improvement while monitoring the results



Vertical integration of the Asset Management with the Commercial Energy Management



Learn more
about xREM

Your local partner with Swiss heritage

The Axpo Group produces, trades and distributes energy reliably in Switzerland and in over 30 countries throughout Europe. Around 4500 employees combine the expertise from 100 years of climate-friendly power production with innovative strength for a sustainable energy future.

Axpo is an international leader in energy trading and in the development of tailor-made energy solutions for its customers.



Axpo Iberia
Paseo de la Castellana 66 | 28046 Madrid
T +34 91 594 71 70 | F +34 91 594 71 71
info.es@axpo.com | www.axpo.com

Follow us

